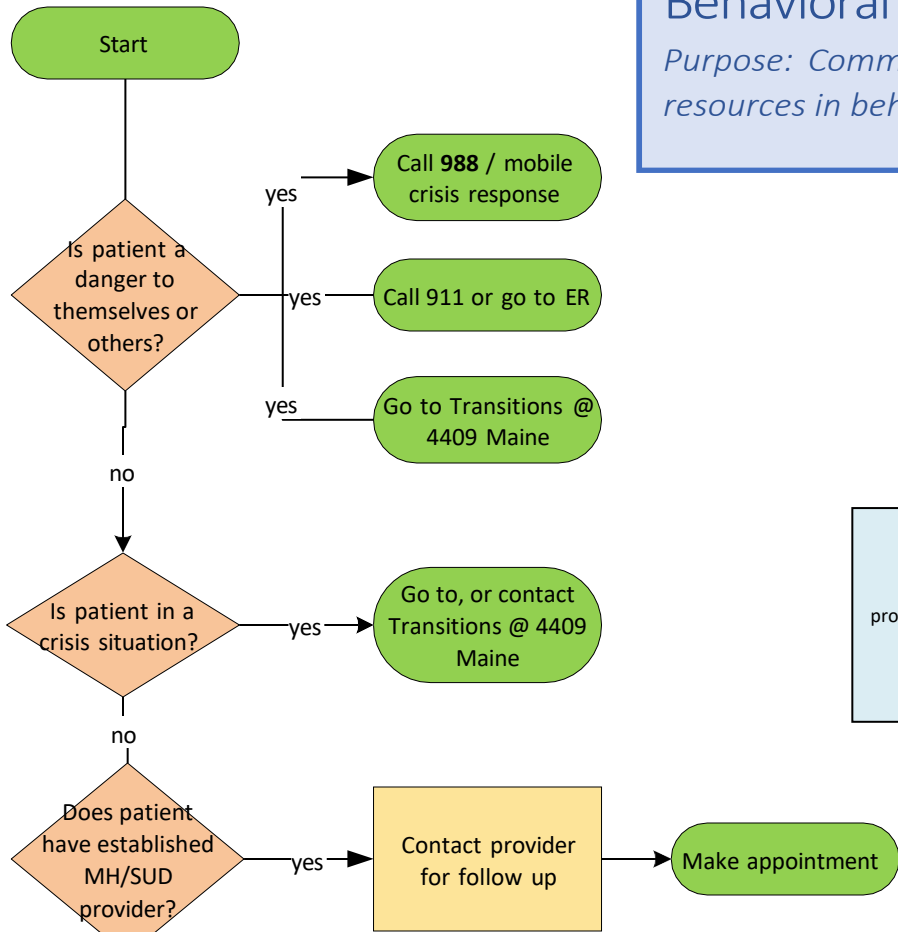


Behavioral Health Decision Guide

Purpose: Community members to assess actions and resources in behavioral situations



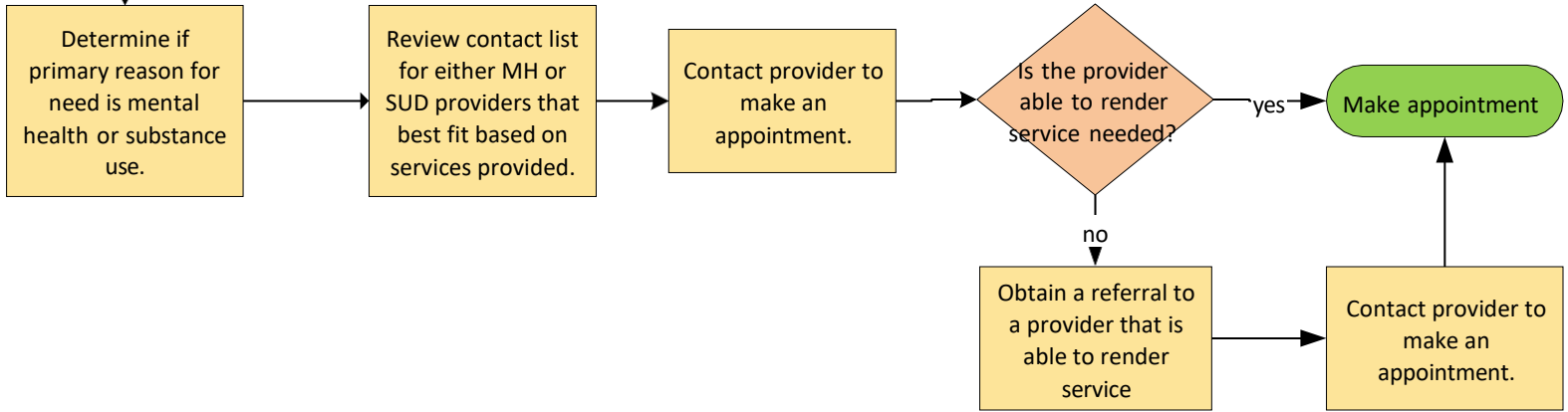
United Way
of Adams County, IL



Follow your organization's processes first.

The 988 Suicide & Crisis Lifeline offers 24/7 call, text, and chat access to trained crisis counselors who can help people experiencing suicidal, substance use, and/or mental health crisis, or any kind of emotional distress. People can also dial 988 if they are worried about a loved one who may need crisis support. Anyone can call/text 988 for support!

Transitions located @
4409 Maine
provides walk in crisis services
M-Th 8-8, Fri. 8-4
217-223-0413



ADAMS COUNTY BEHAVIORAL HEALTH (BH) RESOURCE LIST

SUICIDE AND CRISIS LIFELINE: CALL OR TEXT 988

Organization	MENTAL HEALTH (MH)			SUBSTANCE USE (SUD)			AGE/POPULATION		PAYOR SOURCE					
	Psychiatry/ Medication Management	MH Counseling/ Therapy	MH Case Management/ Community Support	SUD Counseling/ Therapy	Medication- Assisted Treatment	SUD Residential	Children/ Adolescent	Adult	Medicaid	Medicare	Private Insurance	Sliding scale	No charge	Self Pay
Blessing (217-224-4453)	yes	yes					yes	yes	yes	yes	yes	yes		yes
Catholic Charities (217) 222-0958		yes					yes	yes			yes	yes		
Clarity Healthcare (217) 222-6277	yes	yes	yes	yes	yes	yes	yes	yes	yes	yes	yes	yes		yes
Cornerstone (217) 222-8254	yes	yes					yes	yes		yes	yes	yes		yes
Family Guidance Center (217) 617-4097					yes- Methadone								yes	
Hetzler & Associates (217) 214-5615		yes					yes	yes	yes					yes
Hopewell Clinic (217) 223-0170				yes				yes						yes
Midwest Counseling (217) 224-4080		yes					yes - 12+	yes			yes			yes
QMG (217) 222-6550	yes	yes					yes	yes	yes	yes	yes	yes		yes
SIU Center for Family Medicine (217) 224-9484	yes	yes		yes	yes		yes	yes	yes	yes	yes	yes		yes
Transitions (217) 223-0413	yes	yes	yes	yes			yes	yes	yes	yes	yes	yes		yes

Service Definitions

Psychiatry	Utilization of medications to assist with mental health symptoms impacting daily living.
MH Counseling/ Therapy	Individual or group (family, couples) sessions focused on processing issues related to mental health
MH Case Management/ Community Support	Provides assistance with accessing community resources (e.g. housing, employment, etc) to address basic needs and also assistance with learning coping skills for day to day challenges.
SUD Counseling/ Therapy	Individual or group (family, couples) sessions focused on processing issues related to substance use.
Medication- Assisted Treatment	the use of medications, in combination with counseling and behavioral therapies, to provide a "whole-patient" approach to the treatment of substance use disorders
SUD Residential	Twenty-four hour residential treatment with high intensity individual and group SUD counseling/therapy

Adams County offers a wide array of social services and resources. Please scan the QR code to the right to view an exhaustive list of resources or visit <https://www.co.adams.il.us/home/showpublisheddocument/7826/638066067908830000>

Other Organizations Supporting Behavioral Health Services	Description of support services provided	Contact Info
Bella Ease	Advocacy and Support for Children & Families	www.bellaease.com
Quanada	Domestic Violence Shelter/Services	www.quanada.org
Recovery Anonymous	Substance Use Support groups	recoveryanonymous@yahoo.com
AA Self-Help Groups	Alcohol Use Support Groups	https://findrecovery.com/aa_meetings/il/quincy/
NA Self-Help Groups	Substance Use Support groups	https://findrecovery.com/na_meetings/il/quincy/
SIU Groups	Child & Adolescent Groups	Call (217) 224-9484 ext 5720
Addicts Victorious	Substance Use Support groups	www.horizonsquincy.com/ 217-223-5530 ext 2301
Regeneration (formerly known as Celebrate Recover)	Substance Use Support groups	https://www.thecrossing.net/about/regeneration/
SASS (Screening, Assessment, and Support Services)	Crisis Assessment Services for anyone with Illinois Medicaid and uninsured youth under age 18	To make a referral, call 1-800-345-9049

